

M/Y GIADA



Tony Lovec
YACHT MANAGEMENT



M/Y GIADA

Tony Lovec
YACHT MANAGEMENT



M/Y GIADA

WONDERFUL
Tony Lovac
YACHT MANAGEMENT



M/Y GIADA

Tony Lovec
YACHT MANAGEMENT



M/Y GIADA

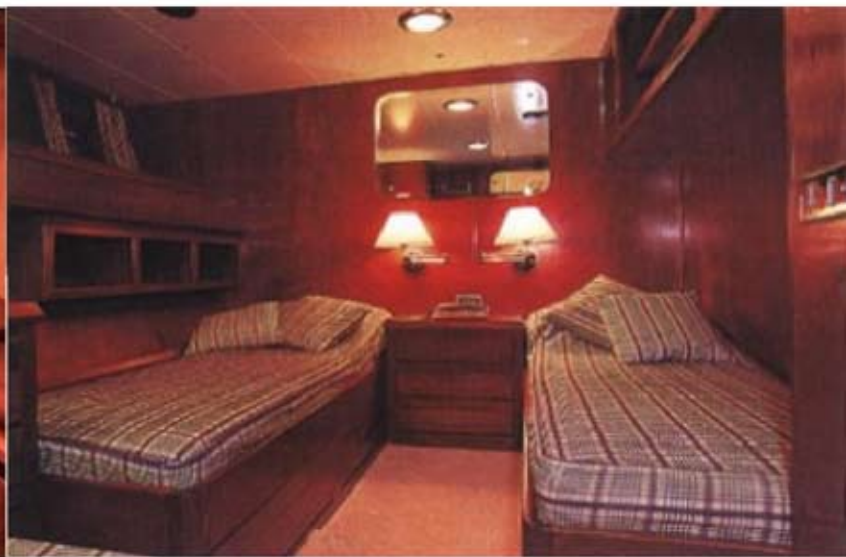
Tony Lovec
YACHT MANAGEMENT



M/Y GIADA

RELAXING

Tony Lovac
YACHT MANAGEMENT



M/Y GIADA

Tony Lovec
YACHT MANAGEMENT



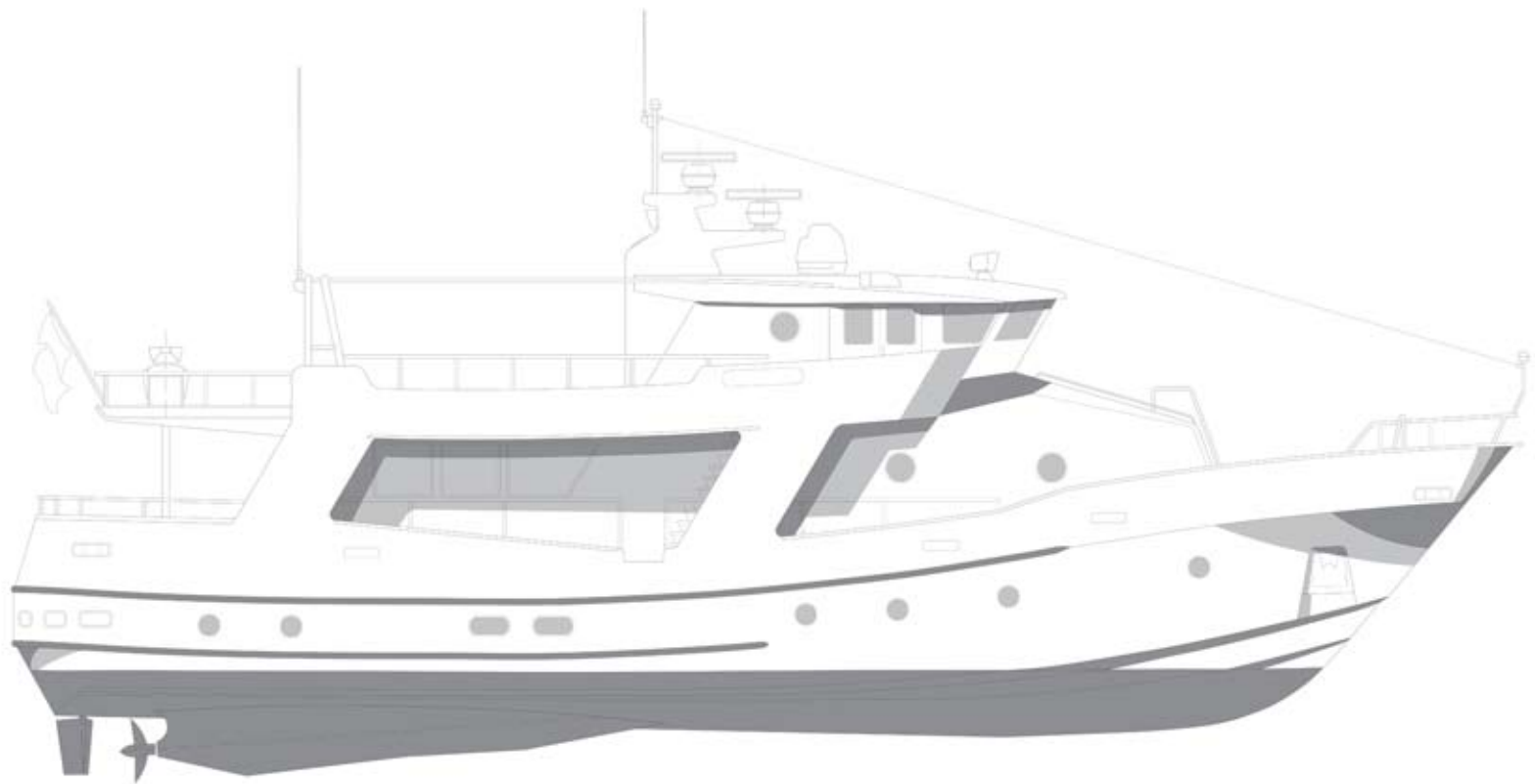
M/Y GIADA

Tony Lovec
YACHT MANAGEMENT



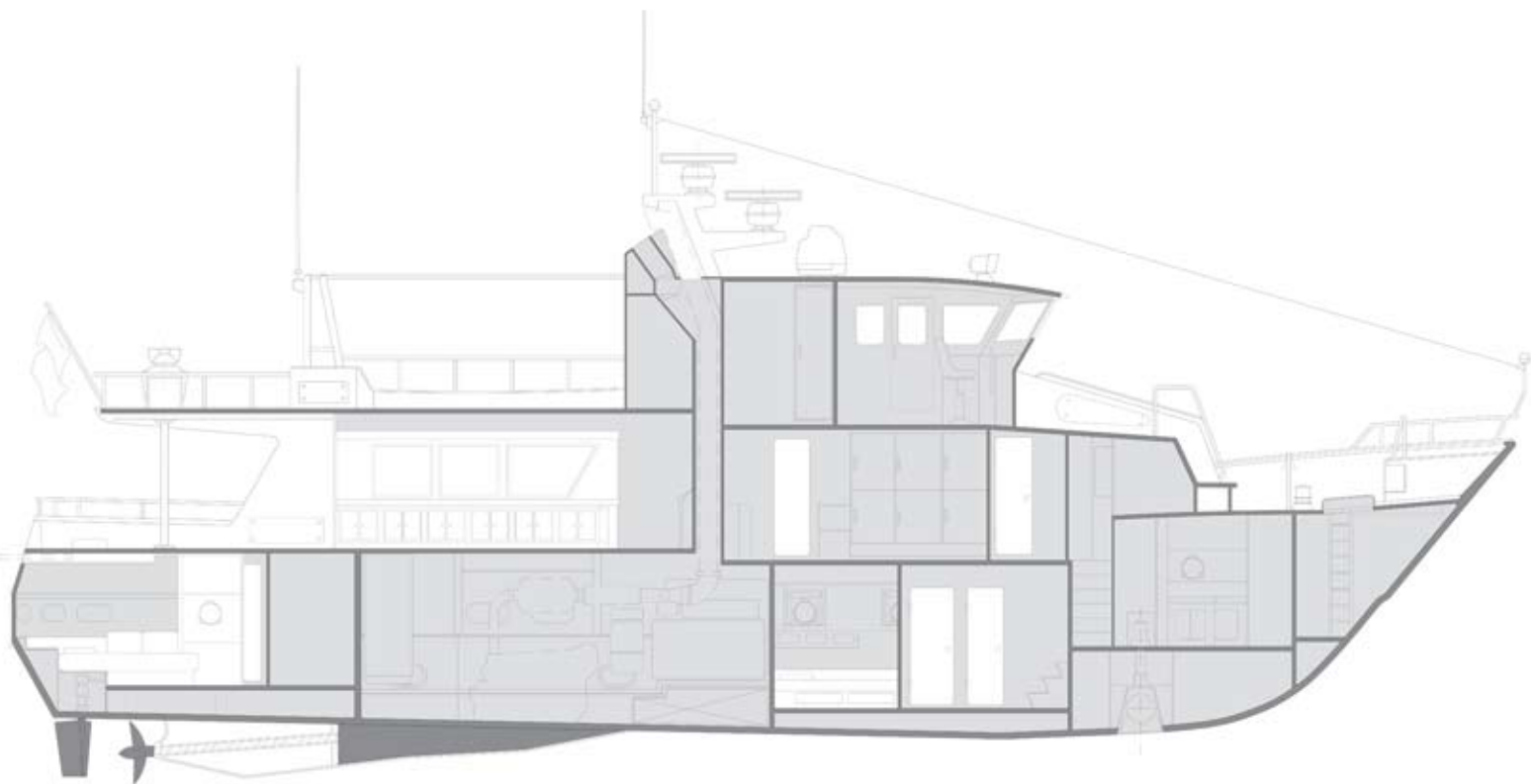
M/Y GIADA

Tony Lovec
YACHT MANAGEMENT



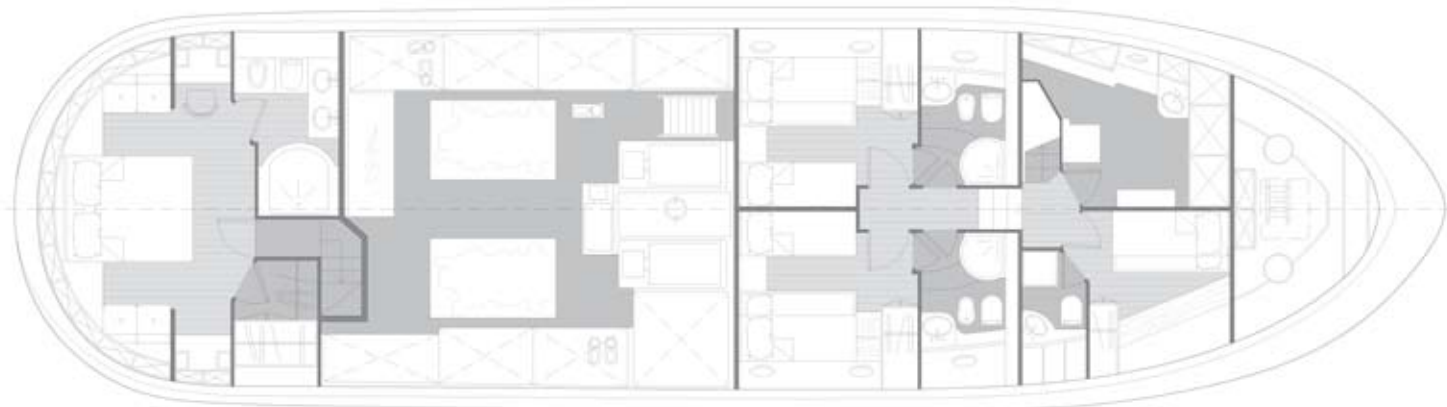
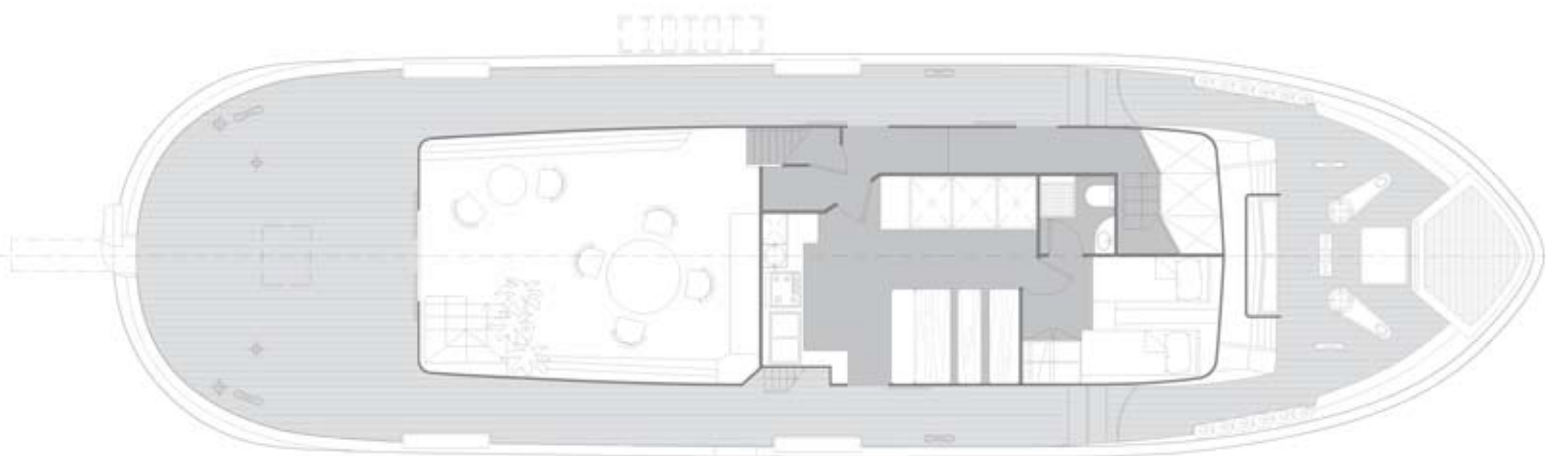
M/Y GIADA

Tony Lovec
YACHT MANAGEMENT



M/Y GIADA

Tony Lovec
YACHT MANAGEMENT



M/Y GIADA

Tony Lovec
YACHT MANAGEMENT

CHARACTERISTICS

Builder	Catarsi Schipping System s
Year of construction	1994
Type	Super Calafuria
Materials	sandwich/ fiber glass
Length	25 ml
Width	7,08 ml
Engine	2 Volvo Penta TAMD 122 D
Cruising speed	10 knots
Generators	3 x ONAN
Diesel oil container	14 tons
Use	120 l. per hour generators
Water container	6 tons
Salt purifier	200 l. per hour

EQUIPMENTS

Tender Novurania 430 with engine Yamaha 50 hp
Kayak
Fishing equipments

ROOMS

1 main cabin VIP
3 double rooms with the possibility of 1 more bed in two
1 single room for the Captain
1 three bed room for the crew
The whole boat is provided with air conditioning.

M/Y GIADA

Tony Lovec
YACHT MANAGEMENT

Tony Lovec Yacht Management
Malija 79, 6310 Izola, Slovenia
phone: 00386 41 623 364
mail: info@tonylovce.com, web: tonylovce.com